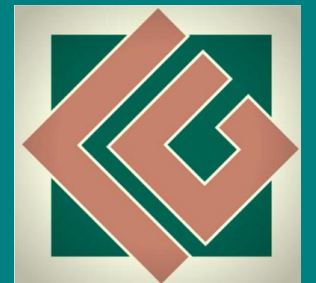

EVERGREEN IRRIGATION SYSTEM UPDATE 2019

CITY OF CASA GRANDE
PUBLIC MEETING
THURSDAY, JANUARY 24, 2019





Mission

To Provide a Safe, Pleasant Community For All Citizens



STRATEGIC PLAN KEY FOCUS AREAS



- QUALITY OF LIFE
- MARKETING
- EDUCATION
- FISCAL RESPONSIBILITY
- INFRASTRUCTURE

We are Committed to Service

Serve Casa Grande through a variety of City Services designed to promote quality of life.

Ensure the safety of the community through aggressive public safety efforts and programs.

Respond to the needs of the community by promoting communications and accessibility.

Value the tax dollar and maintain a fiscal policy that keeps taxes low.

Incorporate safeguards to assure fairness and equitable treatment of all citizens.

Continue to evaluate our services and ourselves to ensure quality.

Endeavor to hire the best people we can find and help them develop their abilities.

HISTORY OF THE EVERGREEN IRRIGATION SYSTEM

Well History

- 1928 - Evergreen Subdivision platted - Irrigation began shortly after
- 1946 – Evergreen District annexed into the City, well purchased by the City
- 1960 – Underground delivery system began
- 1967 – Underground delivery system completed
- 1982 – Well registered with ADWR

Repair History

- 1986 – Pump repairs – special assessment, hourly rate begins
- 1991 – Fire in motor – motor repair
- 1994 – Emergency repairs – special assessment
- 2003 – Major repairs pump – special assessment
- 2014 – Major repairs – 50% shared cost, \$1019 per user

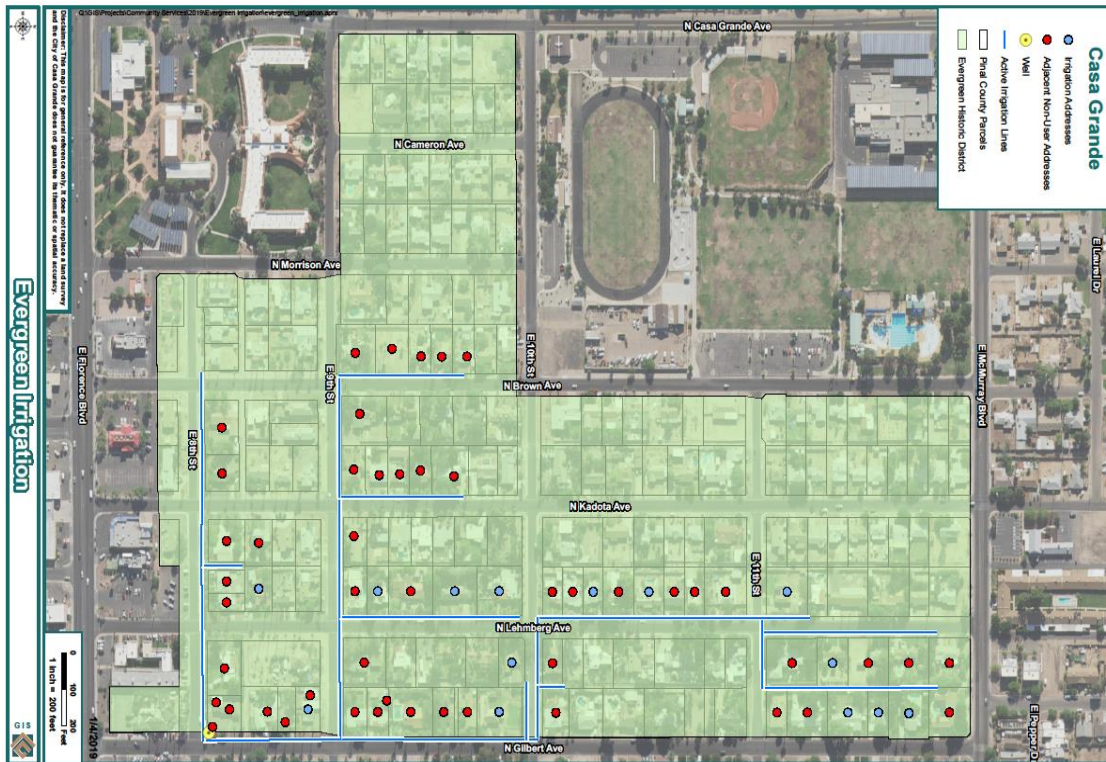
EVERGREEN IRRIGATION SYSTEM

1986 Ordinance

Section 11-4-2 Assessments

Assessments are designed to recover large costs to the district which occur on an irregular or unpredictable schedule. Examples of such costs are repair and replacement of the pump and vehicle used in providing the service. Assessments shall be divided equally among all users of the service.

MAP OF THE EVERGREEN DISTRICT



Information on Map

- 63 Potential User Addresses
- 14 Active Users

CG News note: The city has now determined that there are only 9 active users in the system

EVERGREEN IRRIGATION SYSTEM

Current Issues

- Gallons per minute now 100 gpm or less
- Users continue to shrink
- Water table continues to lower
- Delivery lines in unknown condition
- Well nearing end of useful life
- Can't drill new well on current site

INCOME/EXPENSE BY YEAR

Revenue by year

- 2016 - \$8514
- 2017 - \$10,654
- 2018 - \$13,318
- 2019 to date - \$4,899

Expenses by year

- \$19,976
- \$26,852
- \$26,507
- to date - \$16,650

City Subsidy by year

- \$11,462
- \$16,198
- \$13,190
- \$11,751 to date

EVERGREEN IRRIGATION SYSTEM

Options

- Leave the system as is with continued City subsidy.
- Let the citizens take over operation of the well
- Abandon the entire operation
- Lower fees and continue operation with higher City subsidy
- Change users to drip and/or sprinkler systems
- Drill a new well – costs of \$200,000+ - who pays? City or users?
- Other ????

QUESTIONS FROM PREVIOUS STUDY SESSION

I. What is the price to drill a new well?

A new well can be drilled at a cost of approximately \$250,000.

-Cost of drilling is approximately \$200 a foot, but there are many other costs including casing, pump and electrical.

-Would the delivery system be replaced? Costs range from \$486,000 to \$770,000 estimated for installing new delivery lines.

-These questions can not be answered until an RFP or agreement is made with proper drilling companies.

QUESTIONS FROM PREVIOUS STUDY SESSION

- Can the well be drilled on the same site?

- The current size of the site is 45'X40'. ADWR typically allows wells to be drilled between 50-600' from the existing site. A waiver can be granted to drill on the same site, however questions remain.

- Will a driller work on the same site?

- Will ADWR grant a new well site?

- If drilled on the same site, what additional costs may be incurred because of debris from the old well?

- If needing to move to a new site, what additional costs for procurement of land?

QUESTIONS FROM PREVIOUS STUDY SESSION

- Is the City required to maintain trees and shrubs in the Right of Way?
 - According to Section 17.52.360 of our municipal code the City is only responsible for Right of Way maintenance if the area meets particular conditions. The Evergreen District does not meet any of these conditions.
 - Most of the palm trees in the area are outside the Right of Way, however, there are plants located within the right of way in certain areas.
 - The City has not maintained any of the trees or shrubs within the Right of Way in at least the past 38 years.



Questions